

FLUOROPON®



Most UV
Resistant

70%
PVDF

Superior
Performance



Application
Methods



TOE
Earth Tones



Monumental/
Roofing

\$\$\$

Moderate

**AAMA
2605**

AAMA 2605



Valspar

BONE WHITE

c: 431A893 s: 391A453

STONE WHITE

c: 431A894 s: 391A454

BIRCH WHITE

c: 431A853 s: 391F157

SIERRA WHITE

c: 431A861 s: 391F156

POLAR WHITE

c: 431A895 s: 391F068

PORTLAND STONE

c: 432B174 s: 392F213

SANDSTONE

c: 433B315 s: 393A345

SANDCASTLE

c: 433B311 s: 393F076

HERRINGBONE

c: 437B502 s: 397F220

YORKTOWN

c: 432B135 s: 392F212

LIGHT STONE

c: 433B182 s: 393A344

CONCH

c: 434B007 s: 394F167

TAUPE

c: 432B173 s: 392F211

QUAKER GRAY

c: 432B171 s: 392F254

SHELburnE

c: 433B312 s: 393F075

DESERT ROSE

c: 433B316 s: 394F168

STONE GRAY

c: 432B172 s: 392F233

INDY GREEN

c: 435B424 s: 395B121

BURNT ALMOND

c: 433B331 s: 393F104

SAHARA TAN

c: 437B453 s: 397F269



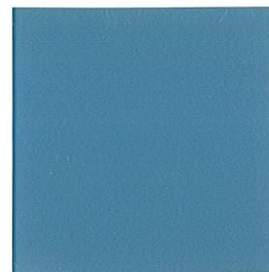
MOCHA
c: 437B493 s: 397F272



TEAL PATINA
c: 435B447 s: 395F568



REGAL RED**
c: 434A986 s: SL4A108



LEGACY BLUE
c: 436B317 s: 396F287



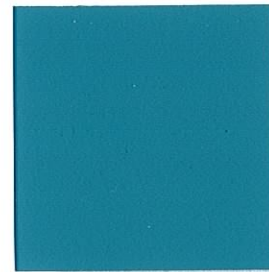
COCOA BROWN
c: 437B502 s: 397F266



AGED COPPER
c: 435B425 s: 395F502



CORONADO RED
c: 434X308 s: 394F169



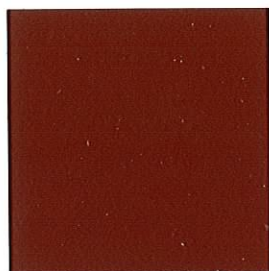
AEGEAN BLUE
c: 436B296 s: 396F240



PATRICIAN BRONZE
c: 437B483 s: 397A508



PATINA GREEN
c: 435B411 s: 395B122



COLONIAL RED
c: 434A897 s: 394F170



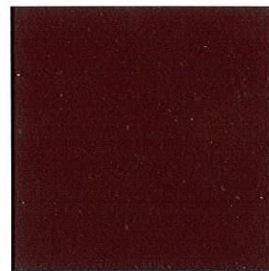
REGAL BLUE
c: 436B194 s: 396X549



DARK BRONZE
c: 437B473 s: 397A509



EVERGREEN
c: 435B187 s: 395B120



BRANDYWINE
c: 434B017 s: 394F186



EBONY BLACK
c: 438A400 s: 378X500



**FLUROPON
CLASSIC® II**



CLASSIC II - COPPER PENNY
c: 439Z637M* s: 399B101



CLASSIC II - BRIGHT SILVER
c: 439ZM608M* s: 399X440



CLASSIC II - ZINC
c: 439Z618M* s: 399X468

**Requires special primer if being coil applied. **Coil formulation contains lead. Please note that all coil color codes have changed and color shade may be slightly different vs. colors of same name on previous Fluoropon® color cards.*

c = Coil Application . s = Spray Application